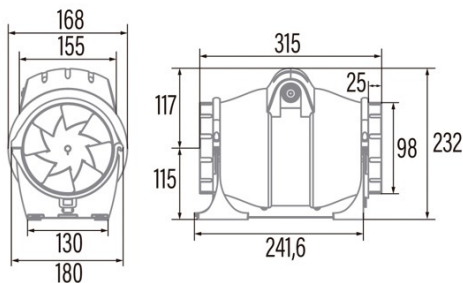




# DUCT IN-LINE 100/270

Cod. **00702000**

EAN **8422248021203**



## INFORMACIÓN GENERAL

EAN/UPC	8422248021203
Subfamily	In Line

### General features

Motor type	AC/INDUCTION
Motor power (W)	18;40
Lightning Technology	N/A
Light Quantity	N/A
Filter Type	N/A
Number of layers	N/A
Control description	N/A
Power levels	2
Timer	-
Timer Hygro	-
Electronic filter saturation indicator	-
Dimmable lighting	-

### Installation

Width (mm)	315
Height (mm)	232
Depth (mm)	168
Total minimum height (mm)	2300
Outlet diameter (mm)	98
Maximum pressure (Pa)	150
Anti-return flap included	-
Easy installation system	No

### Power connection

Rated voltage (V)	230
Rated frequency (Hz)	50
Rated power input (W)	18;40
Protection against electric shock	Class II
Plug type	No plug

### Accessories

Fixed Grid	1910200
Overpressure shutter	1910300
Speed Switch	1142001

### Power and water connection

Rated voltage (V)	230
Rated frequency (Hz)	50
Rated power input (W)	18;40
Protection against electric shock	Class II
Plug type	No plug